



Excellence in
global logistics services



ABOUT NOATUM

- Our three Business Units
- Tailor-made industrial solutions accross Businss Units
- Leading AD Ports Group Group's Logistics Cluster
- Our legacy of success
- Building trust
- Global footprint
- Our Volumes
- Beyond the name
- Mission and vision
- Core values



Driving value for your business...

We are a **leading multinational group** specializing in maritime, global logistics and port operations with 60 years of experience.

We have successfully integrated our activities into **three main business areas**: maritime services, logistics and port terminals operations.



...with tailor-made industrial solutions

Our main value proposal is the cross-cutting nature of the services we provide through our three core areas: maritime, logistics and port terminals.

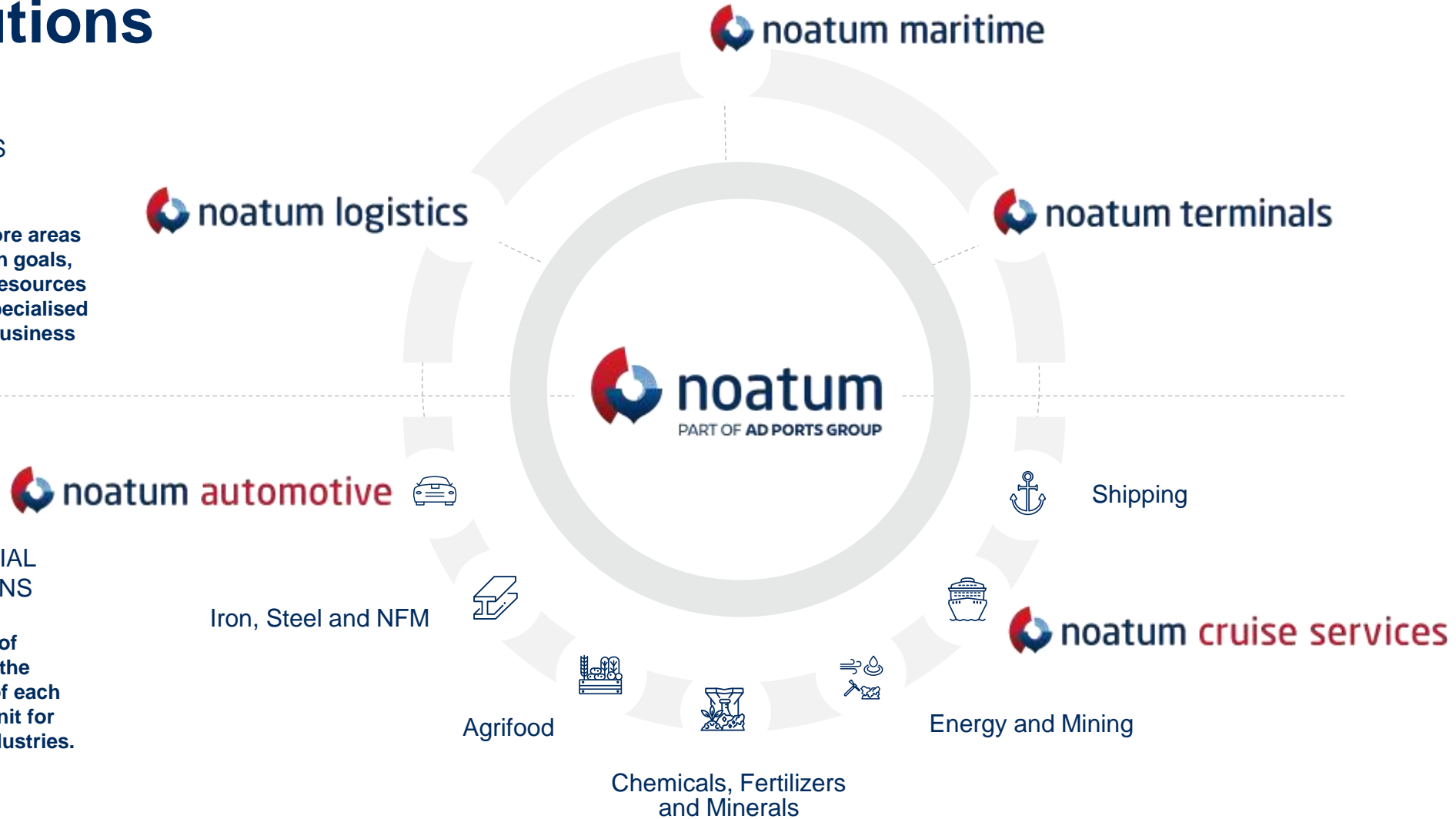
Through its **synergies**, we can offer highly **specialized solutions** adapted and tailored to the needs of each client, with a strong focus on **innovation**.

BUSINESS UNITS

Our three core areas with our own goals, strategies, resources and staff, specialised in specific business areas.

INDUSTRIAL SOLUTIONS

The power of combining the strengths of each business unit for specific industries.



Empowered by AD Ports Group to lead the Logistics Cluster

Noatum Group has **assumed leadership of AD Ports Group's Logistics Cluster** since its acquisition in July 2023.

AD Ports Group is a **vertically integrated trade enabler**.

The company's five business clusters – Economic Cities & Free Zones, Ports, Maritime, Logistics and Digital – make up a resilient trading community bonded by strong partnerships which generate stable performance and consistent growth.



Our legacy of success

A JOURNEY OF GROWTH



1963

CREATION OF MARÍTIMA DEL MEDITERRÁNEO IN BARCELONA, AS SHIPPING AGENCY

Marítima del Mediterraneo SA

**1964
1979**

NATIONAL EXPANSION BUSINESS DIVERSIFICATION: maritime services and stevedoring and storage companies

**1980
1999**

INTERNATIONAL EXPANSION: Portugal, France and Morocco

Integration of **FREIGHT FORWARDING ACTIVITIES**
Incorporation of **PORT TERMINALS:** A Coruña, Barcelona, Castellón

**1980
1999**

Expanding forwarding activities: **WAREHOUSING**
Incorporation of **PORT TERMINALS:** Santander

**2006
2010**

ACQUISITION Combalia Agencia Marítima
INTERNATIONAL EXPANSION: China and India

**2011
2015**

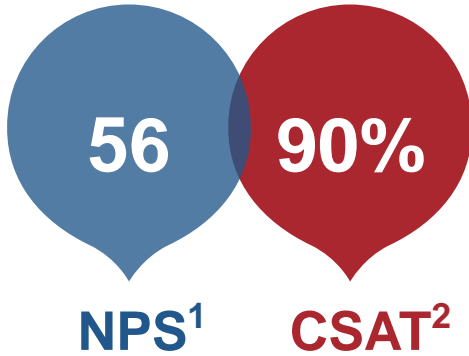
INTERNATIONAL EXPANSION: Chile, Turkey and Algeria
Incorporation of **PORT TERMINALS:** Tarragona

**2016
2024**

INTERNATIONAL EXPANSION: 31 countries
ACQUISITION MIQ Logistics (19 countries)
Incorporation of **PORT TERMINALS:** Málaga, Sagunto, Huelva, Asturias, Khalifa, Pasajes

Integration with **AD Ports Group** to lead its logistics cluster

Building trust...



**Client base: 16,000 people. 19 questions asked.
26 countries reached.*

WHAT CLIENTS LIKE ABOUT US...

- Personal attention
- Fast response
- Range of services
- Operational excellence
- Competitive rates

...with our passionate team, all over the world

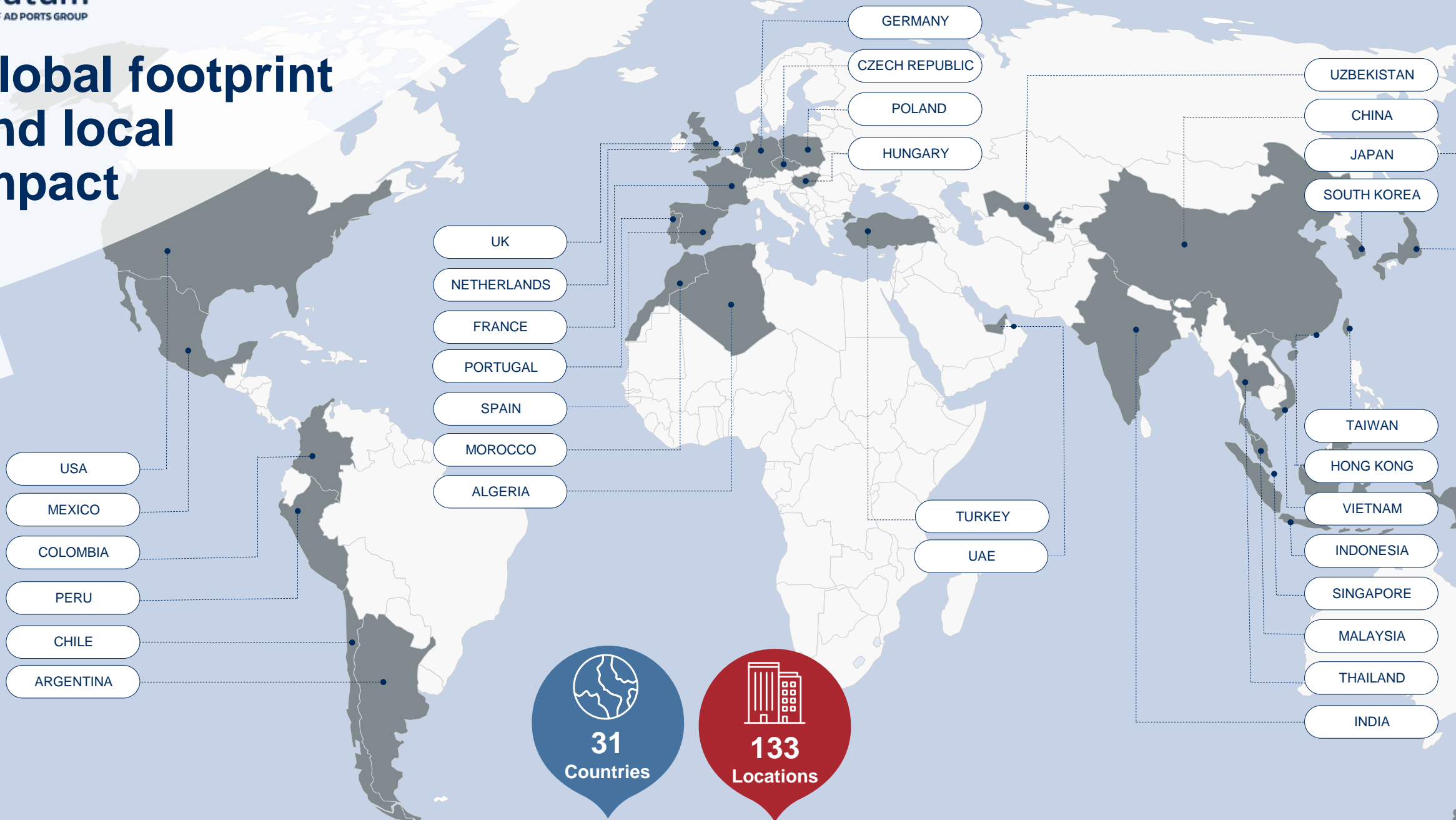


+4,300
Employees



17
Terminals

Global footprint and local impact




31
Countries


133
Locations

Excelling in Global Operations

EMPOWERED BY STRONG VOLUMES



SHIP CALLS
15,452

MANAGED	INVESTEES
13,640	1,812



CONTAINER FREIGHT VOLUMES (TEUs)
+560K



CONTAINERS HANDLED (TERMINALS & DEPOTS)
+151K

MANAGED	INVESTEES
+47K	+104K



TONNES MANAGED
+1,575M



VEHICLES
+1.8M

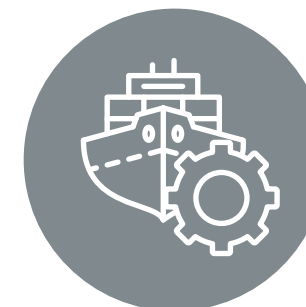
HANDLED IN PORTS	TRANSPORTED
+1.6M	+210K



TONNES HANDLED (TERMINALS)

+14.8M

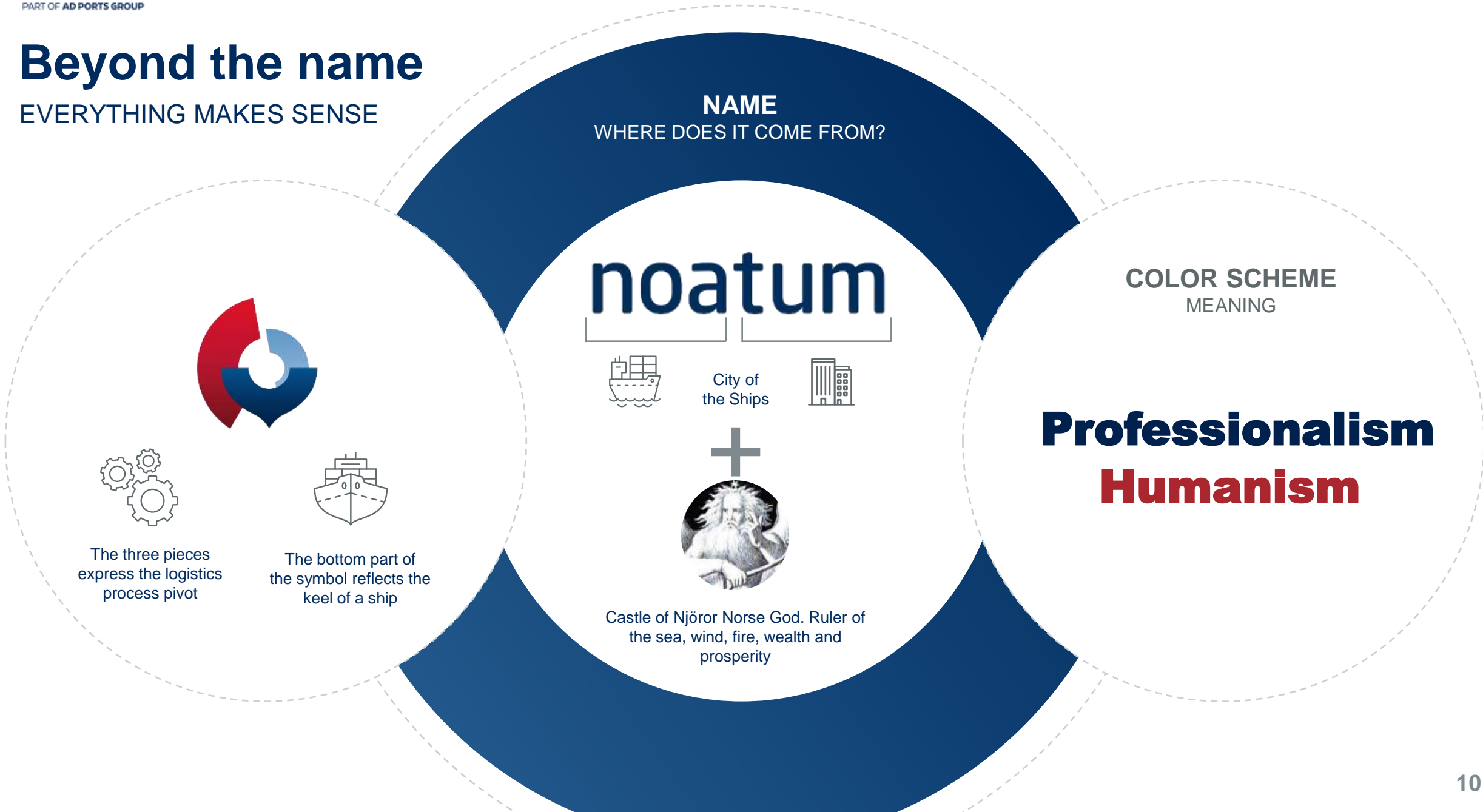
MANAGED	INVESTEES
+6.5M	+8,3M



SHIP SERVICES
+67K

Beyond the name

EVERYTHING MAKES SENSE



Our mission and vision



To provide a first class maritime, global logistics and port terminals service recognized for continuous improvement in a safe working environment and to be the first choice for our clients

To be a leading international company renowned for their talented professionals and operational excellence in maritime services, logistics services and port operations



Guided by our core values

Care

We care for our employees, clients, suppliers, partners and communities. We aim to help them achieve their full potential by building strong and long-term relationships for the benefit of all.

Excellence

We always aim to deliver on what we promise with professionalism and excellence.

Integrity

As a company we are committed to working with integrity, respect and fairness in everything we do.

Continuous Improvement

We always strive to progress and will develop creative solutions and innovations in order to improve our business and the service we provide to our clients.

Client Success

To ensure the success of all our clients, we are committed to delivering a first class, competitive and efficient service.

Teamwork

Teamwork is one of the key drivers to our success and demands strong relationships both internally and in working with our clients.

NOATUM CARES

- Our ESG (Environment, Social, Governance) approach
- Employee well-being
- Continuous improvement (Integrated Management System)
- Quality certifications
- Membership

2

Aiming for responsible business and social impact

OUR ESG (ENVIRONMENT, SOCIAL, GOVERNANCE) APPROACH

At Noatum, we are focused on growing responsibly. **We build respectful and sustainable businesses** that provide value and growth to society.

Committed to sustainability. We work to offer efficient transport and logistics services that reduce the environmental footprint, through logistics solutions that seek to improve energy efficiency, take advantage of technical breakthroughs and the gradual decarbonization of logistics activities.

Committed to diversity, equity, inclusion. We prioritize people, and ensure that our employees and stakeholders receive dignified treatment in a working environment that guarantees equal opportunities and optimal conditions of health, safety and well-being.

In Noatum's business strategy we are committed to **incorporating relevant issues in the areas of environmental, social, and corporate governance (ESG)**. This is critical in ensuring our competitiveness as a company and guaranteeing our continuity and positive impact on both present and future generations.



More information
can be found at:
www.noatum.com

Employee Well-being

Noatum is committed to promoting the **overall health and safety of all its employees** and stakeholders, including their physical, mental, and social well-being.

Our concern and interest focused on the individual is always based on a comprehensive and integrated approach, and takes health and safety into account in all the organization's policies, in addition to legal compliance.

Noatum is ISO 45001:2018 certified for Health, Safety and Welfare at work, which attests to our commitment to health, safety, and welfare in the workplace, and demonstrates our effectiveness, efficiency, and added value in this area.



Continuous improvement

INTEGRATED MANAGEMENT SYSTEM

We are constantly reviewing our processes to increase efficiency and maximize the potential of our organization while improving services to both our internal and external clients.



Certified for excellence

NOATUM LOGISTICS

ISO 9001



LRQA - Quality Management System Certificate



BUREAU VERITAS - Quality Management System Certificate



SGS - Quality Management System Certificate



TÜV - Quality Management System Certificate

ISO 14001



LRQA - Environmental Management System Certificate



TÜV - Environmental Management System Certificate

ISO 45001



LRQA - Occupational Health & Safety Management System Certificate



TÜV - Occupational Health & Safety Management System Certificate



QMS - Occupational Health & Safety Management System Certificate

OTHERS



AEO - Customs simplification - Security



BASC - Business Alliance for Secure Commerce



CBP - Customs simplification - Security



IAC - Customs simplification - Security



CNS - Customs simplification - Security



The International Cyanide Management Institute



DGAC - Dirección General de Aeronáutica Civil



SQAS - Safety and Quality Assessment Systems



EFFICIENCY NETWORK - Barcelona



Marca de Garantía Quality Management for Port of Valencia

NOATUM MARITIME

ISO 9001



ISO 9001 - LRQA - Quality Management System Certificate

ISO 14001



ISO 14001 - LRQA - Environmental Management System Certificate

ISO 45001



ISO 45001 - LRQA - Occupational Health & Safety Management System Certificate

OTHERS



AEO - Customs simplification - Security



EFFICIENCY NETWORK - Barcelona



TRACE - Legal Compliance



Marca de Garantía Quality Management for Port of Valencia



Travelife certification

NOATUM TERMINALS

ISO 9001



LRQA - Quality Management System Certificate



BUREAU VERITAS - Quality Management System Certificate

ISO 14001



LRQA - Environmental Management System Certificate



BUREAU VERITAS - Quality Management System Certificate

ISO 45001



LRQA - Occupational Health & Safety Management System Certificate



BUREAU VERITAS - Quality Management System Certificate

OTHERS



AEO - Customs simplification - Security



GMP - Good Manufacturing Practices



ANFAC - Vehicle traffic in merchandise regime



IAC - Customs simplification - Security



Marca de Garantía (Sagunto) (Quality Management for Port of Sagunto)



LRQA - Reference Puertos del Estado



LRQA - Guide to Good Environmental Practices



LRQA - Quality Handling of Multipurpose Goods

Membership

THE VALUE OF NETWORKING



NOATUM



NOATUM LOGISTICS

 FETEIA - Federación Española de Transitarios-Expeditores Internacionales y Asimilados	 ANATEC - Asociación Nacional del Transporte Terrestre de Carga	 Spanish Chamber of Commerce in Hong Kong
 FIATA - International Federation of Freight Forwarders Associates	 APAT - Associação dos Transitários de Portugal	 IOFFLAT - International Ocean Freight Forwarders & Logistics Association, Taiwan
 Cámara de comercio Luso-británica	 Cámara de comercio Luso-árabe	 Indonesian Association of Freight-Forwarder
 UTIKAD - Association of International Forwarding and Logistics Service Providers	 İstanbul Ticaret Odası	 TAFLA - Taipei Airfreight Forwarders & Logistics Association of Taiwan
 Hizmet İhracatçıları Birliği	 APACIT - Asociación Peruana de Agentes de Carga Internacional	 PCN – Project Cargo Network
 Cámara Española de Comercio de la República Argentina	 Deniz Ticaret Odası	 XLP – Projects Network
 HAFFA - Hong Kong Association of Freight Forwarding and Logistics	 CTPAT - Customs - Trade Partnership Against Terrorism	 EPN – Exclusive Project Network
 CAPMIN - Cámara Argentina de Proveedores Mineros	 AAACI - Asociación Argentina de agentes de carga Internacional	 Global Industrial Relocation Network
 ACIPAN - Asociación de comercio, industria, producción y afines del Neuquén	 ALOG - Asociación Logística de Chile	 AEE – Spanish Wind Energy Association
 Spanish Chamber of Commerce - Chile	 Cámara de Comercio de Santiago	

NOATUM MARITIME

 Med Cruise	 BIMCO - Baltic International Maritime Council
 ECASBA - European Community Association of Ship Brokers and Agents	 FONASBA - Federation of National Associations of Brokers and Agents
 CCIL - Cámara de comercio e Industria Luso Espanhola	 INTERTANKO - International Association of Independent Tanker Owners
 AGEPOR - Agentes de Navegação de Portugal	 UMF - Union Maritime Fluvial
 AACPLR - Association des Agents Consignataires des Ports de La Rochelle	 ASECOB - Spanish Association of Ship Consignees
 AACN - Association des Agents Consignataires des Navieres	 CCIA - Angolan Chamber of Commerce and Industry
 GHAAM - Groupement Havrais des Armateurs et Agents Maritime	 Syndicat des Armateurs Bordeaux
 Union Maritime de la Rochelle	 UMPS- Union Maritime Port de Sète
 ARMA-Armateurs du Maroc	 APAMA - Association Professionnelle des Agents Maritimes Algériens

NOATUM TERMINALS

 ASOPORT - Asociación Estatal de Empresas Operadoras Portuarias	 ANESCO - Asociación Nacional de Empresas Estibadoras y Centro Portuarios de Empleo
 UNISTOCK - Asociación Española de Almacenistas Portuarias de Granos, Cereales y sus Derivados	 CEOE - Confederación Española de Organizaciones Empresariales
 EMAS - Eco-Management and Audit Scheme	 FERRMED, ASBL
 AECE - Asociación Profesional de Expertos Contables	 Asociación de Empresas Estibadoras
 APPORT - Agrupación para la promoción del Port de Tarragona	 Propeller Club Castellón
 ANV - Asociación Naviera Valenciana	 Asociación Provincial de Empresas Estibadoras
 Asociación de Consignatarios de Buques, Estibadoras y Agentes de Aduanas de Málaga	 Málagaport – Empresa Asociada de la Autoridad Portuaria de Málaga
 ASCOESANT - Asociación de Consignatarios y Estibadores de Buques en el Puerto de Santander	 ADUCANT - Asociación de Aduaneros de Cantabria
 SGC – General Stevedoring Council	

NOATUM LOGISTICS

Delivering tailored solutions and exceeding Client Expectations

- Logistics solutions
- Our global reach
- Volumes 2023
- Our value proposition
- Our services
- Our solutions
- Our footprint



Logistics solutions that best fit your needs

WE DELIVER LOGISTICS SERVICES AND
SUPPLY CHAIN SOLUTIONS THAT
ENABLE OUR CLIENTS TO SUCCEED

Noatum Logistics acts as a global client-centered logistics operator providing integrated value-added solutions for the supply chain of all its clients, and is a specialist in international transport, project cargo, logistics and customs.

The company has a robust network of its own offices in 25 countries, and an extensive network of agents in the rest of the world.



Our customers entrust us with their volumes; together we are stronger



SQM WAREHOUSES



CBM LCL



SEA FREIGHT TONNES



AIR FREIGHT TONNES



LANDFREIGHT TONNES



LOGISTICS OPERATIONS



CUSTOMS CLEARANCES



TEUs (EX/IM)

* Figures 2023

Our value proposition

Logistics services and solutions that best fit
your entire supply chain needs.

We combine the expertise of our team in core **services...**

AIR



- STANDARD AIR
- TIME SENSITIVE
- TEMPERATURE CONTROLLED
- CHARTER & EXPRESS

OCEAN



- FCL
- LCL
- REEFER FCL
- REEFER LCL
- RO-RO
- FLEXIS
- ORIGIN / DESTINATION BUYERS CONSOL
- BREAKBULK / BULK
- HEAVYLIFT CHARTERING
- OCEAN CHARTER
- OTHER

ROAD & RAIL



- BULK ROAD (FTL)
- OVERLAND FTL
- OVERLAND LTL
- REFRIGERATED ROAD TRANSPORT
- RAIL SHIPMENT

CUSTOMS BROKERAGE



- CUSTOMS BROKERAGE
- CONSULTANCY (GTC)
- FISCAL REPRESENTATION (GTC)
- TARIC CLASSIFICATION (GTC)

WAREHOUSING & DISTRIBUTION



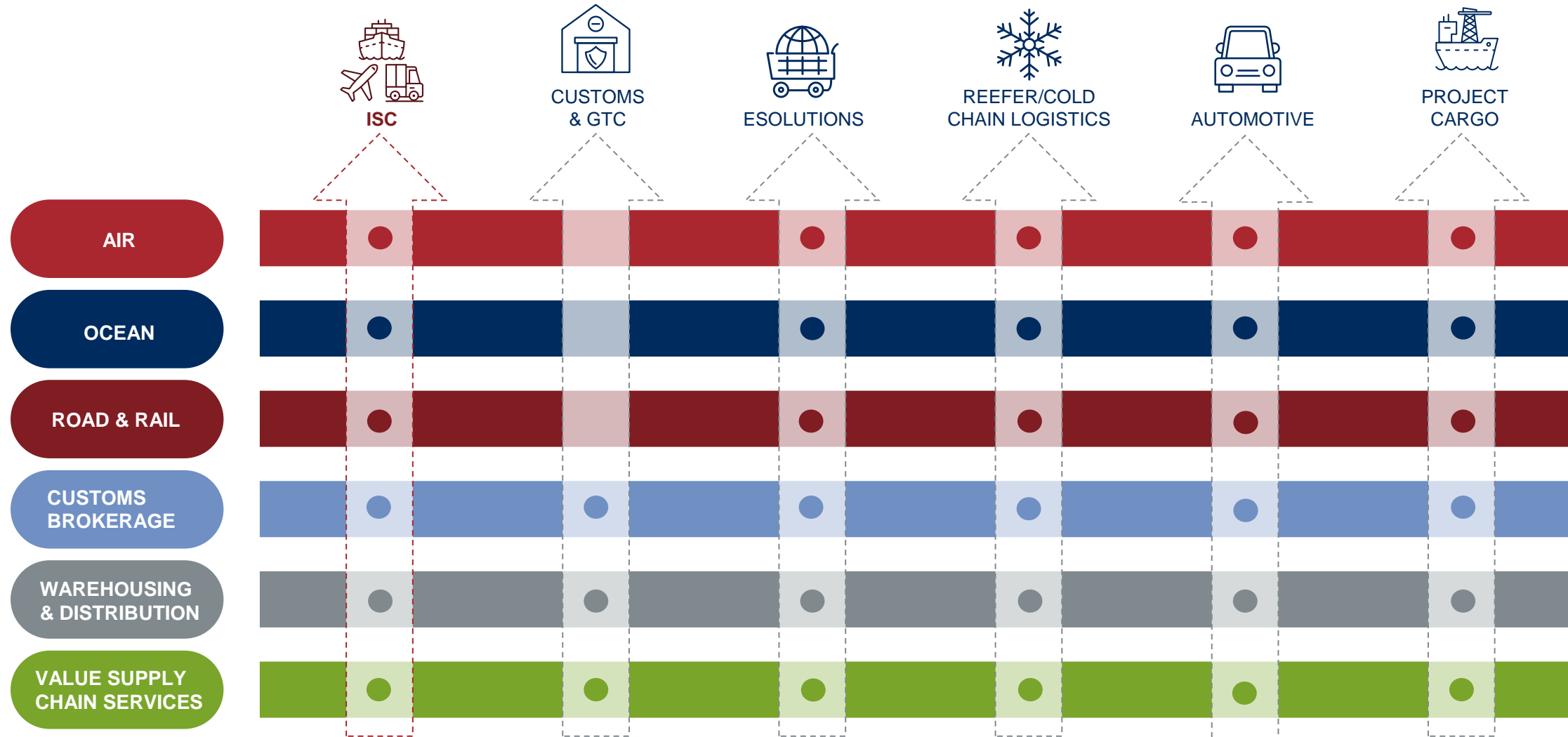
- WAREHOUSING
- DISTRIBUTION
- TEMPERATURE-CONTROLLED STORAGE & DISTRIBUTION
- PICK & PACK B2B & B2C
- OTHER VALUE ADDED ACTIVITIES

VALUE SUPPLY CHAIN SERVICES



- ORDER & VENDOR MANAGEMENT
- PURCHASE ORDER AND SKU VISIBILITY SOLUTION
- SUPPLY CHAIN CONSULTING
- FREIGHT MANAGEMENT SERVICES (CT, 4PL, BOOKING AGENT)

...But our clients are in need of more than a **service**, they seek integrated **solutions**



Our solutions give respond to different industry's needs

WITH IN-DEPTH KNOWLEDGE AND EXPERIENCE OF DEFINED INDUSTRIES.

We offer customized logistics solutions that align with our clients' specific needs and sectors creating value for their business



FASHION & INDUSTRY

- FASHION
- FURNITURE
- RETAIL



AUTOMOTIVE, AEROSPACE & RAIL

- AEROSPACE
- AUTOMOTIVE
- TRANSPORT RAIL



CHEMICAL



INDUSTRIAL & CONSTRUCTION



FOOD INDUSTRY

- FOOD INDUSTRY – AGRIFOOD & OTHERS



HEALTHCARE & BEAUTY



HIGH TECH & CONSUMER ELECTRONICS



PORT EQUIPMENT



MINING, ENERGY AND OIL & GAS

- MINING
- OIL & GAS
- E&R - HYDROGEN, OFFSHORE WIND, SOLAR.
- ENERGY & RENEWABLES (E&R OTHERS)



AGENTS & FFWD

- AGENTS
- COLOADERS
- TRANSPORT COMPANIES

Our services

Delivering exceptional logistics services

Air

STANDARD AIR
TIME SENSITIVE
TEMPERATURE CONTROLLED
CHARTER & EXPRESS

A LEADING PROVIDER OF AIR CARGO SOLUTIONS

With an experienced team, secured capacity and partnerships with key airlines, we ensure **reliable, flexible and cost-effective solutions**.



Air service adaptability

Standard Air

Back to back and consolidation services:

- Deferred 6-8 days
- Standard: 3-5 days
- Express 1-2 days

Air Urgent

- Full and part charter services
- Hand carry
- Express & Next flight out services
- Courier



Full and part charters

We offer flexible full and part charter options for special cargo and hard-to-reach destinations



Total delivery solutions

Door-to-door
Door-to-airport
Airport-to-door
Airport-to-airport



Multimodal

- Sea-air
- Truck-Air
- Cross dock



Special services

- Temperature controlled
- Dangerous goods
- Perishables



Ocean

DELIVERING YOUR CARGO ACROSS THE SEAS

FCL
LCL
REEFER FCL
REEFER LCL
RO-RO
FLEXIS
ORIGIN BUYERS CONSOL
DESTINATION BUYERS CONSOL
BREAKBULK/BULK
HEAVYLIFT CHARTERING
OCEAN CHARTER
OTHER

We provide ocean freight services for **all types of equipment and cargo**, offering **competitive rates** and **reliable access to capacity** by maintaining strategic partnerships with major shipping lines



Flexible shipping tiers



Secured group freight



Total delivery solutions



Global ocean shipping

Key capabilities

- Port to port and door to door solutions.
- Secured space & strategic carrier partnerships at a Group level



Road & Rail

COST-EFFECTIVE FOR SHORT AND MEDIUM DISTANCES

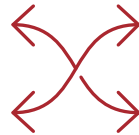
**BULK ROAD
OVERLAND FTL
OVERLAND LTL
RAIL SHIPMENT
REFRIGERATED ROAD TRANSPORT**

We can ensure **efficient** and **secure** inland shipping, seamlessly integrated with our air and ocean freight services for **timely deliveries**.



We design and optimize our clients' cargo flows

We offer a range of transportation solutions, such as routing and space optimization, intermodal solutions, full truck loads (FTL) and partial truck loads (LTL), and hot shot/dedicated services, to meet our clients' needs and budget.



Versatile and reliable freight services

Our services includes container drayage, international & national road transport, and specialized equipment.



Customized logistic services

- FTL, LTL, Groupage
- Distribution including replenishment and parcel deliveries
- Rail and barge services
- Project and out-of-gauge moves



Customs Brokerage

REDUCING RISK AND LIABILITY

We provide solutions to our customers concerning **all international trade matters.**



Expert Advice



Regulatory Compliance



Trusted Relationships



Digitalization & AI

Global, regional, and local experts here to assist our clients in all aspects of global trade:

- Harmonized Tariff Classification
- Country of Origin and Marking Requirements
- Valuation
- Record Keeping
- Duties / Taxes / Fees
- Bonded Warehouses
- Free / Foreign Trade Zones
- Trade Security Programs (AEO, CTPAT...)



West Med



7
Customs
Offices



50
Employees



North America



2
Customs
Offices



18
Employees

Warehousing & Distribution

OPTIMIZING YOUR SUPPLY CHAIN

WAREHOUSING
DISTRIBUTION
PICK&PACK B2B
PICK&PACK B2C
TEMPERATURE-CONTROLLED STORAGE
TEMPERATURE-CONTROLLED DISTRIBUTION
OTHER VALUE ADDED ACTIVITIES

We **customize** cross-docking and warehouse operations across Asia, Europe, America and Middle East, ensuring **complete observance** of our clients' **strict demands** for **security, safety, and temperature control**.



Quality control

We manage stock levels and entries, cycle counts, quality controls and sample management.



Order enhancement

We handle replenishment and outbound orders adding value by carrying out rework, kitting, special handling, packaging management, labelling and assemblies.



Supply chain integration

Effortlessly connecting the supply chain with smooth inbound supplier replenishment and efficient outbound client distribution.



Inventory intelligence

Our IT systems provide full insights into inventory and order statuses.

Value Supply Chain Services

DELIVERING EXCEPTIONAL LOGISTICS SERVICES

ORDER & VENDOR MANAGEMENT
PURCHASE ORDER AND SKU VISIBILITY SOLUTION
SUPPLY CHAIN CONSULTING
FREIGHT MANAGEMENT SERVICES
(CT, 4PL, BOOKING AGENT)

We ensure the **seamless and timely delivery of goods** by meticulously monitoring and completing purchase orders from the moment they are placed until they reach their destination.

Enhancing supply chain efficiency

- Our experiences consultancy team tailors solutions for efficient supply chains, risk management and sustainable growth.
- Delivering comprehensive freight management for end-to-end supply chain visibility and control, ensuring optimal cargo transport and handling all necessary documentation.
- Shipment, Purchase Order and SKU visibility levels.
- Managing supplier relations to guarantee prompt and high-quality goods delivery.
- Offering 4PL/booking agent and control towers services as a central point for all logistics needs, combining and improving operations with multiple service providers.



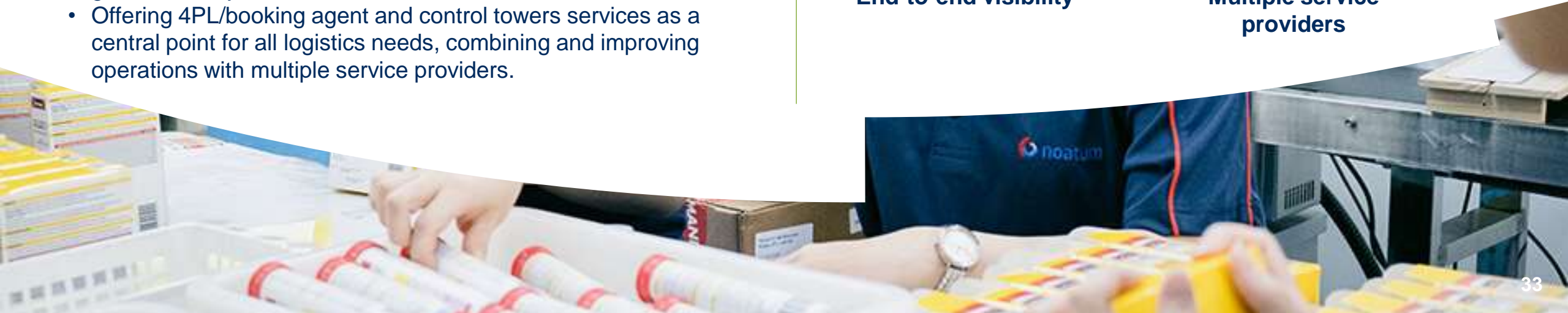
4PL services



End-to-end visibility



Multiple service providers



Our solutions

**Services into solutions:
delivering client value**

International Supply Chain Solution

DRIVING VALUE FOR OUR CLIENTS WITH CUSTOMIZE SOLUTIONS

International Supply Chain (ISC)



We help our clients in enhancing **global end-to-end supply chain solutions** by efficiently linking multiple-origin, overseas vendors with distribution centers and end customers, being the gateway to Noatum Logistics Services.

Our expertise

Focus on **Retail & Consumer** driven businesses (**Retail, Fashion, Manufacturers and Brands**) – and primarily on their inbound from manufacturer to market.

Consistently **reducing costs**, **optimizing time**, **minimizing inventory**, and enhancing supply chain **flexibility** and **agility**

Valued supply chain services



Order & Vendor Management



Freight management services



Purchase order and SKU visibility solution



Freight management services (CT, 4PL, BOOKING AGENT)



Supply chain consulting



Customs & GTC Solution

HELPING OUR CLIENTS WITH TRADE REGULATIONS

We provide **Global Trade Consultancy** services to assist clients in mastering the intricate and ever-changing world of international trade.



Comply with all rules and regulations

Enhancing our clients' supply chain efficiency to boost their business growth.



Expertise and experience

Guiding our clients through the complexities of global trade with our expertise.

Our service range

Covering a spectrum of services including:



Import and export compliance assessments



Security evaluation



Total landed-cost analysis



Training, policy and procedures



Protests and regulatory research



Trade agreement advice



Customs valuation guidance



Global Trade Compliance:

- Consultancy (GTC) (Hours)
- Fiscal representation (GTC) (Hours)
- Taric classification (GTC) (Hours)



eSolutions

PROVIDING END-TO-END ASSISTANCE TO OUR CLIENTS

We **streamline** our clients' eCommerce activities, providing comprehensive **one-stop omnichannel solutions** for all B2C, B2B and B2B2C, enhancing the **purchasing experience** of their customers

Logistics integration

Effortlessly combining freight forwarding, cross-border clearance, warehousing, storage, e-fulfilment, transport, and last-mile delivery

Real-time order fulfillment

Seamlessly connected to client eCommerce platforms, managing every step from order receipt to courier shipping

Value-added eServices

Improving our clients' business with rework, kitting, labelling, assemblies, packing, co-packing, client support, API integration, and returns management

Full visibility e-2-e

Offering full visibility and integration through user-friendly systems with advance API/EDI technology for order tracking



Reefer/cold chain Logistics Solution

EXPERTS IN TEMPERATURE-SENSITIVE GOODS

We **design, organize and execute** reliable, compliant end-to-end transport solutions for **any type of temperature-sensitive cargo**.



Cold chain services

Offering temperature-controlled services: FCL, LCL and air cargo, specialized in frozen & chilled meat, dairy products, frozen fish and fruits and vegetables



Ensuring safety and compliance

Conducting risk assessments, developing SOPs, and adhering to GxP (Good Distribution Practice) compliance for maximum safety and efficiency.



Customized logistics solutions

Our market knowledge and following our know how and expertise we can guide our customers on their door-to-door, border, phytosanitary and veterinary enquiries



Temperature- controlled warehouses

- Portugal
- United Arab Emirates
- Columbia (shareholding)



Automotive Solution

SPECIALIZING IN SAFE VEHICLE TRANSPORT WITH EXPERTISE

We provide **all-encompassing global container and Ro-Ro solutions**, catering to **automotive OEMs**, importers, exporters, and distributors. Our approach integrates Noatum's Maritime, Terminals and Logistics expertise for **seamless end-to-end delivery** from factory to final clients.

Comprehensive one-stop-shop services



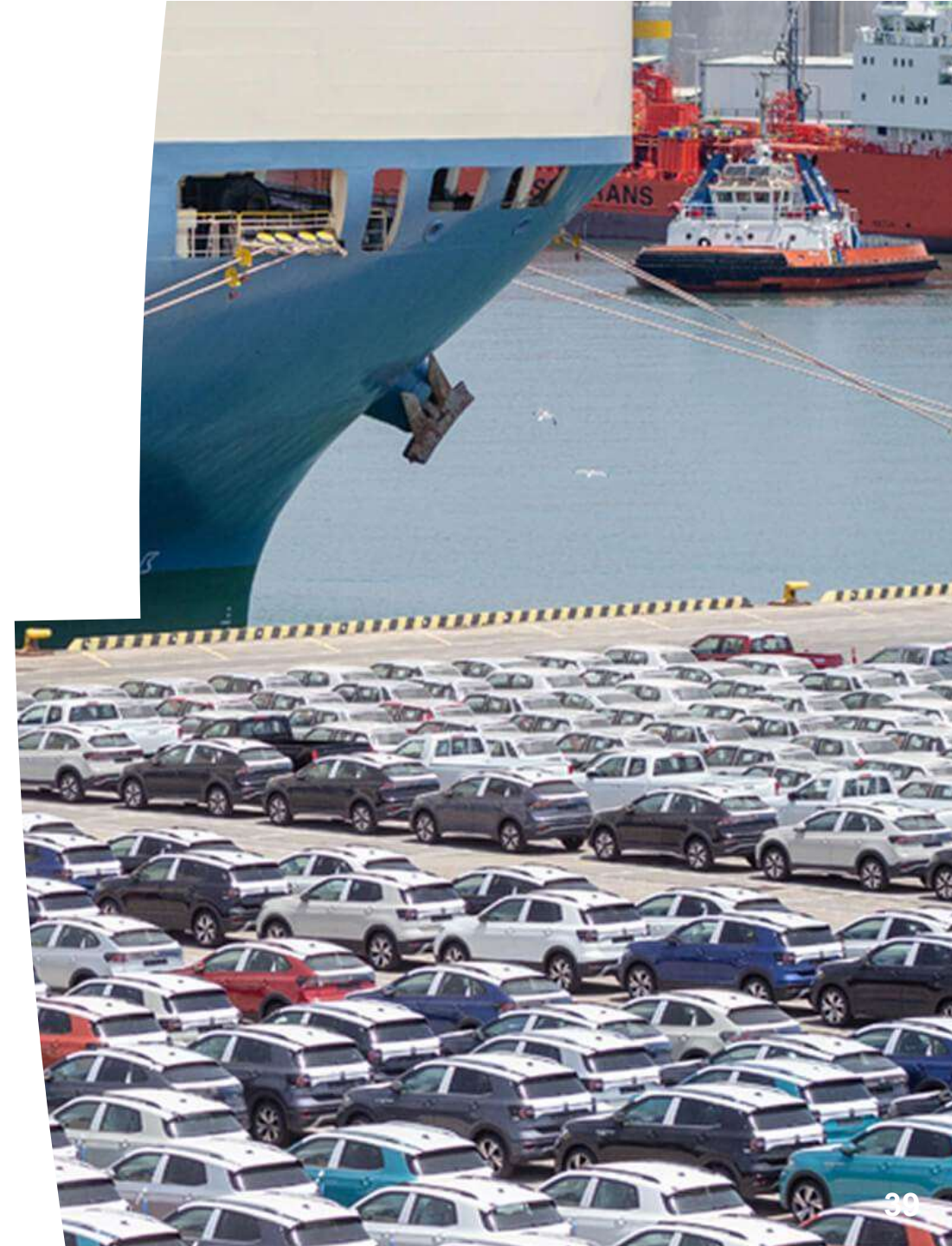
First mile International shipping Quality control **Technical services** **Customs services** Last mile delivery

Quality and Technical Excellence

Stringent quality control, pre-delivery inspections, and vehicle washing. Advance technical services including diagnostics, maintenance, and repair. Complete customs service's covering clearance, bonded storage, compliance, and fiscal representation.

Strategic centers location

State-of-the-art technology centers at our own port terminals in Spain (Barcelona, Sagunto, Malaga) and Abu Dhabi (Port Khalifa), serving as hubs for Europe, GCC, Middle East, West India, and East Africa.



Project Cargo Solution

EFFICIENTLY MANAGING OUR CLIENTS' PROPOSALS

In Noatum Project Cargo we provide **highly specialized logistics solutions** for industrial clients. With global coverage, our activity includes sectors such as: Offshore wind, oil & gas, power, renewable energies, mining, rail stock or port equipment, as well as any other sort of industrial cargo.

Custom-made solutions

Collaborating with our clients to design, organize, manage and deliver every step from the initial idea to successful implementation.

Comprehensive service offerings

- End-to-end design and engineering
- Route surveys and customs compliance consultancy
- Total project management from start to finish



Commitment to excellence

Professionalism, creativity, and rigorous standards of safety, security, and reliability are the core of our services.

Expertise in complex projects

Highly experienced teams assume end-to-end responsibility for challenging projects, from large-scale construction to intricate remote move operations,



10 Reasons to choose Noatum



DISCLAIMER

The information in this presentation is confidential and solely intended for its addressee. All information is “as is” and without any representation or warranty. It remains in property of Noatum and no license or other rights are granted for its dissemination or reproduction, including trademarks and logos.

www.noatumlogistics.com

